



Maxforce[®] FC SELECT

PROFESSIONAL INSECT CONTROL ROACH KILLER BAIT GEL

FOR USE IN COMMERCIAL, INDUSTRIAL AND RESIDENTIAL AREAS

ACTIVE INGREDIENT: Eprontinil: (5-Amino-1-(2,6-dichloro-4-(trifluoromethyl)phenyl)-4-(1,3,5-trifluoromethyl)sulfinyl)-1H-pyrazole-3-carbonitrile):0.01%
OTHER INGREDIENTS: 99.99%
Total: 100.00%

*CAS NO. 120068-37-3
EPA Reg. No. 432-1259 EPA Est. No. 071106-GA-003
**STOP - READ THE LABEL BEFORE USE
KEEP OUT OF REACH OF CHILDREN**

CAUTION

Product may stain fabrics and clothing.

FIRST AID

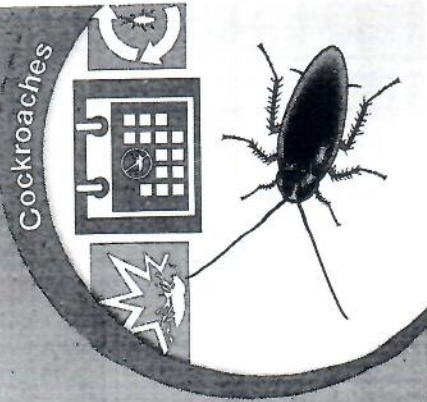
- | | |
|--------------------------------|---|
| If on skin or clothing: | <ul style="list-style-type: none"> • Take off contaminated clothing. • Rinse skin immediately with plenty of water for 15-20 minutes. • Call a poison control center or doctor for treatment advice. |
| If on eyes: | <ul style="list-style-type: none"> • Hold eye open and rinse slowly and gently with water for 15-20 minutes. • Remove contact lenses, if present, after the first 5 minutes, then continue rinsing. • Call a poison control center or doctor for treatment advice. |

Have the product container or label with you when calling a poison control center or doctor or going for treatment. You may also contact 1-800-324-7677 for emergency medical treatment information.

**Contents: 4 Reservoirs
30g (1.06 Oz) each
Total Net Weight: 120g (4.23 Oz)**

79434820
80251335B 140410AV2

See back and side panels for complete Precautionary Statements, Hazards, Directions for Use and additional instructions.



5.25"

0.75"

5.21875"

1.875"

1.84375"

5.25"



Maxforce®
FC SELECT

PROFESSIONAL INSECT CONTROL ROACH KILLER BAIT GEL



Maxforce®
FC SELECT

PROFESSIONAL INSECT CONTROL ROACH KILLER BAIT GEL

FOR USE IN COMMERCIAL, INDUSTRIAL AND RESIDENTIAL AREAS

ACTIVE INGREDIENT: Fipronil*, [5-Amino-1-(2,6-dichloro-4-trifluoromethyl phenyl)-4-(1, R, S)-(trifluoromethyl) sulfonyl]-1H-pyrazole-3-carboximidic acid	0.01%
OTHER INGREDIENTS:	99.99%
Total:	100.00%

*CAS NO. 120068-37-3
EPA Reg. No. 432-1259
EPA Est. No. 071108-GA-003
STOP - READ THE LABEL BEFORE USE
KEEP OUT OF REACH OF CHILDREN

LIMITATIONS OF LIABILITY: TO THE EXTENT CONSISTENT WITH APPLICABLE LAW, THE EXCLUSIVE REMEDY OF THE USER OR BUYER FOR ANY AND ALL LOSSES, WHETHER IN CONTRACT, WARRANTY, TORT, NEGLIGENCE, STRICT LIABILITY OR OTHERWISE, SHALL NOT EXCEED THE PURCHASE PRICE PAID, OR AT BAYER CROSCIENCE LP'S ELECTION, THE REPLACEMENT OF PRODUCT.

B&B Partner Patrol Station is a trademark of B&B Equipment Company. The Bayer Cross (reg'd), Maxforce® and Domino Effect® are registered trademarks of Bayer.

Produced for:
Bayer Environmental Science
A Division of Bayer CropScience LP
2 T. W. Alexander Drive
Research Triangle Park, NC 27709
Product of China

Bayer

PRECAUTIONARY HAZARDS TO HUMAN DOMESTIC ANIMALS CAUTION
Keep gel away from foods at all times. Avoid contact with skin. Harmful if absorbed through skin. Thoroughly wash hands after use. Avoid contact with skin and water thoroughly with soap and water.

PHYSICAL AND CHEMICAL PROPERTIES:
Do not use this product in or on a possibility of stock hazardous material.

DIRECTIONS:
It is a violation of Federal Law to use this product in or on a manner inconsistent with the directions on the label. **MAXFORCE® FC Select Professional Insect Control Roach Killer Bait Gel** may be used as a treatment for the indoor and outdoor control of roaches in the non-food/non-feed areas of residential, commercial, institutional and commercial establishments including: food processing facilities, restaurants, hotels, motels, nursing homes, hospitals, day care centers, food storage facilities, bakeries, beverage facilities, canny plants, garment factories, dry cleaning plants, manufacturing plants, dairies, auto repair shops, frozen food plants, schools, facilities, sewers, aircraft, homes, houses, industrial buildings, kennels, kitchens, manufacturing areas, warehouses, manufacturing plants, meat and poultry processing plants, restaurants, bars, saloons, taverns, bars, and zones. Non-food/non-feed areas of buildings, basements, crawl spaces, attics, closets, pantries, and other areas.

**PRECAUTIONARY STATEMENTS
HAZARDS TO HUMANS AND
DOMESTIC ANIMALS
CAUTION**

Keep gel away from foods and food contact surfaces. Do not use this product in or on electrical equipment where a possibility of shock hazard exists.

PHYSICAL AND CHEMICAL HAZARDS

Do not use this product in or on electrical equipment where a possibility of shock hazard exists.

DIRECTIONS FOR USE

It is a violation of Federal Law to use this product in a manner inconsistent with its labeling. **MAYORCE**® FC Select Professional Insect Control,® Roach Killer Gel may be used as a spot or crack and crevice treatment for the indoor and outdoor (adherent to homes & structures) control of cockroaches in residential areas and the non-food/non-feed areas of institutional, warehousing and commercial establishments, including warehouses, restaurants, food processing plants, supermarkets, hospitals, nursing homes, motels, hotels, apartment buildings, bakeries, beverage plants, breweries, bottling facilities, candy plants, confection, cereal processing and manufacturing plants, dairies and dairy product processing plants, frozen food plants, schools, laboratories, computer facilities, sewers, "aircraft," buses, boats/yachts, trains, barns, houses, industrial buildings, office buildings, kennels, kennels, manufacturing facilities, spice plants, stores, warehouses, manufacturing facilities, pet shops and packaging plants, meat and vegetable canneries, pet shops and zoos. Non-food/non-feed areas include bedrooms, living rooms, bathrooms, closets, media rooms, garbage rooms, bedrooms, entries, vestibules, offices, locker rooms, machine rooms, boiler rooms, garages, map closets, and storage (after canning or bottling). This product may also be used in food/feed areas of food/feed handling establishments as outlined below.

USE RESTRICTIONS

Do not treat food preparation surfaces. Do not apply gel to areas which have been recently sprayed with insecticide, and do not spray insecticide over gel as it may cause the gel to become repellent.

USE ONLY IN AREAS NOT EASILY ACCESSIBLE TO CHILDREN AND PETS. In zoos, apply only in areas inaccessible to zoo animals.

APPLICATION DIRECTIONS

For roach gel: Application rate is dependent on level of infestation and species to be controlled; see application rate table. Apply gel as a spot or as a bead in cracks and crevices. The lower application rate should be used for low to moderate infestations or re-treatments, and the higher rate for more severe infestations or where the population occurs in inaccessible areas. Gel placements should be at or near harborage or aggregation areas, such as corners, or cracks and crevices. Numerous smaller placements will provide faster control than fewer larger spots, especially for German cockroach control.

Place gel under baseboards, sinks, countertop, seats, around water pipes, water heaters, dishwasher equipment, in cracks and crevices as well as voids where insects harbor. **For outdoor use (adjacent to home -or- structure):** Place gel in areas adjacent to structures where roaches may nest or breed. Apply gel to potential points of insect entry, such as eaves, sills, and expansion joints.

Apply gel in protected areas whenever possible. Environmental stresses such as direct sunlight and water will reduce the residual effectiveness. Priority treatment areas may be identified by visual inspection of such areas listed above or aided by trapping techniques or spot flushing.

Refillable stations: This product may be used in the Mayorce Refillable Bait Station or BG6 Perimeter Patrol Station. Refillable stations should be placed every 20 to 30 feet around the perimeter of a structure. Use approximately 2 stations per side of a typical single family home. The quantity of Mayorce FC Select Professional Insect Control Roach Killer Gel Bait added to the bait station will vary depending on the severity of infestations, see the application rate table. Do not exceed 2 - 4 spots per station (3" - 6" bead).

For best results, place stations near: air conditioning units, water faucets, foundation vents and weep holes, decks, utility entry ways (e.g. electrical, cable TV, and wherever cockroaches are frequently found). Regularly inspect all stations and replace bait as needed for continual control.

Position Refillable Bait Stations adjacent to structure in areas where they will not be damaged by lawn equipment such as mowers and trimmers. When placing the station in turf remove sod layer and place station base plate against the soil.

Application should not exceed one teaspoon of gel in refillable bait stations.

INDOOR USE:

Applications in Food/Feed Handling Establishments: Application within food/feed areas of food/feed handling establishments is limited to crack and crevice treatment only. If gel contacts an exposed surface where food is handled, remove gel, and wash exposed surface with an effective cleaning compound followed by a potable water rinse prior to use. Apply with Mayorce Bait Injector directly into cracks and crevices. Place small amounts of gel per spot. Do not apply gel to areas where food, feed, utensils, or processing surfaces may become contaminated. Do not apply gel to areas that are routinely washed such as cracks and crevices in tops of tables, food/feed preparation, and prepared food holding surfaces as gel may be removed by washing. Do not apply gel to surfaces where the temperature exceeds 130°F as heat may not. Examples include, but are not limited to, portions of stoves, ovens, grills, tume hooks, heat lamps, coffee urns, steam tables, basters, fryers, dishwashers, and hot water pipes. Care should be taken to avoid depositing gel onto exposed surfaces. If gel contacts an exposed surface, remove gel and wash exposed surface. Food/feed areas include areas for receiving, storage, packing (canning,

boiling, wrapping, boxing), preparing edible waste storage, and enclosed processing systems (mills, defries, edible oils, spray). Serving areas are also considered a food/feed area when food is exposed and facility is in operation. Apply gel in small amounts between different elements of construction, between equipment and floors, openings leading into voids and hollow spaces in floors, walls, ceilings, equipment legs and bases, around plumbing pipes, doors and windows, behind and under refrigerators, cabinets, sinks, closets, stoves, and other equipment where cockroaches hide. During follow-up visits inspect bait placements and reapply when necessary.

Application of this product in food/feed areas of food/feed handling establishments other than as a crack and crevice treatment is not permitted.

Break-Tip Reservoir: Prior to use, break the strip-top closed end of the gel reservoir at the scored line. After use, the reservoir may be resealed with the enclosed black outlet cap. The black outlet cap is reusable.

Directions for changing reservoirs: With the arrow on the drive rod pointing up, pull the drive rod out as far as it will go. Remove the empty reservoir. Do not reuse empty reservoirs, place in trash. Reservoirs that still contain gel can be sealed with the end cap and outlet call for future use. To attach a new reservoir follow the above directions.

SPECIES/TYPE OF INFESTATION	APPLICATION RATE (SPOTS PER SQ. FT.)
MODERATE INFESTATIONS OR RE-TREATS FOR GERMAN OR BROWN-BANDED ROACHES:	1-2 SPOTS (DIME SIZED) OR 1 1/2" - 3" BEAD
SEVERE OR HEAVY INFESTATIONS FOR GERMAN OR BROWN-BANDED ROACHES	2-4 SPOTS (QUARTER SIZED) OR 3" - 6" BEAD
LARGE ROACHES SUCH AS AMERICAN, SPOT SIZE 1/3" - 1/2"	RECOMMENDED SPOT SIZE

do not treat food preparation surfaces. Do not apply gel to areas which have been recently sprayed with insecticide, and do not spray insecticide over gel as it may cause the gel to become repellent.

bel placements should be at or near harborage or aggregation areas, such as corners, or cracks and crevices. Numerous smaller placements will provide faster control than fewer larger spots, especially for German cockroach control.

For outdoor use (adjacent to home -or- structure): Place in cracks or crevices adjacent to structures where large roaches may nest or breed. Apply gel to potential points of insect entry such as eaves, sills, and expansion joints. Apply gel in protected areas whenever possible. Environmental stresses such as direct sunlight and water will reduce the residual effectiveness.

† American, Oriental, Brown, Smoky Brown
Do not exceed 1 tsp. per station.
If the station is not equipped with a sticker to identify the contents, apply a sticker to the inside of the station.

Directions for loading reservoirs and operation:

1. With the handle of the drive rod facing up, pull the drive rod all the way back. If the drive rod is unable to move, simply un-screw the turn counter-clockwise the black portion of the applicator that holds the gel reservoir until the drive rod moves easily.
 2. Attach empty-filled reservoir of gel with a twist-locking motion. Remove the outlet cap and attach a dispensing to Break-In Reservoir. Prior to use, break the snap-fit closed end of the gel reservoir at the scored line. After use, the reservoir may be resealed with the enclosed black outlet cap. The black outlet cap is reusable.
 3. Turn the knob of the drive rod so that the teeth are facing down and move it slightly forward so that the trigger mechanism will engage. Squeeze the trigger until the drive plunger seats against the piston in the gel reservoir. Gently squeeze the trigger until the gel flows out.
 4. If gel continues to flow after the trigger is released, simply un-screw the portion of the bail applicator that holds the reservoir to a point where gel does not continue to flow after the trigger is released.
- Pest population reduction will be apparent with 2 - 4 - 3 days for German roaches and 8 days for American roaches.
- Most important locations:**
Behind appliances, along baseboards, under appliances, and under sink.

STORAGE AND DISPOSAL

Do not contaminate water, food, or feed by storage or disposal.
STORAGE: Store in a cool, dry area out of reach of children.
CONTAINER HANDLING: If Empty: Do not reuse container. Place in trash or other for recycling if available. If Partly Filled: Call your local solid waste agency or 1-800-CLEANUP for disposal instructions. Never place unused product down any indoor or outdoor drain. If you have questions regarding the use of this product, please call 1-800-337-2957.

IMPORTANT: READ BEFORE USE

Read the entire Directions for Use, Conditions, Disclaimer of Warranties and Limitations of Liability before using this product. If terms are not acceptable, return the unopened product container at once.

By using this product, user or buyer accepts the following Conditions, Disclaimer of Warranties and Limitations of Liability.

CONDITIONS: The directions for use of this product are believed to be adequate and must be followed carefully. However, it is impossible to eliminate all risks associated with the use of this product. Crop injury, ineffectiveness, or other unwanted consequences may result, because of such factors as weather conditions, presence of other materials, or the manner of use or application, all of which are beyond the control of Bayer CropScience LP. All such risks shall be assumed by the user or buyer.

DISCLAIMER OF WARRANTIES: TO THE EXTENT CONSISTENT WITH APPLICABLE LAW, BAYER CROPSCIENCE LP MAKES NO OTHER WARRANTIES, EXPRESS OR IMPLIED, OF MERCHANTABILITY OR FITNESS FOR A PARTICULAR PURPOSE OR OTHERWISE, THAT EXTEND BEYOND THE STATEMENTS MADE ON THIS LABEL. No agent of Bayer CropScience LP is authorized to make any warranties beyond those contained herein or to modify the warranties contained herein. TO THE EXTENT CONSISTENT WITH APPLICABLE LAW, BAYER CROPSCIENCE LP DISCLAIMS ANY LIABILITY WHATSOEVER FOR SPECIAL, INCIDENTAL, OR CONSEQUENTIAL DAMAGES, RESULTING FROM THE USE

OR HANDLING OF THIS PRODUCT.

LIMITATIONS OF LIABILITY: TO THE EXTENT CONSISTENT WITH APPLICABLE LAW, THE EXCLUSIVE REMEDY OF THE USER OR BUYER FOR ANY AND ALL LOSSES, DAMAGES, OR DAMAGES RESULTING FROM THE USE OR HANDLING OF THIS PRODUCT WHETHER IN CONTRACT, WARRANTY, TORT, NEGLIGENCE, STRICT LIABILITY OR OTHERWISE, SHALL NOT EXCEED THE PURCHASE PRICE PAID, OR AT BAYER CROPSCIENCE LP'S ELECTION, THE REPLACEMENT OF PRODUCT.

B&G Performer Patrol Station is a trademark of B&G Equipment Company. Bayer (fey dj), the Bayer Cross (fey dj), Medforce® and Domino Effect® are registered trademarks of Bayer.

Produced for:
Bayer Environmental Science
A Division of Bayer CropScience LP
211 W. Alexander Drive
Research Triangle Park, NC 27709
Product of China



3.375"



Maxforce[®] FC SELECT

PROFESSIONAL INSECT CONTROL ROACH KILLER BAIT GEL

Note: Do not remove this label. Use only in areas not easily accessible to children and pets.

ACTIVE INGREDIENT: Fipronil 0.01%
OTHER INGREDIENTS: 99.99%

TOTAL: 100.00%

FDA Reg. No. 120188-01-3

EPA Reg. No. 432-1229

EPA Est. No. 077106-GA-003

**KEEP OUT OF REACH OF CHILDREN
AND PETS**

CAUTION

Keep gel away from foods and food contact surfaces. Harmful if absorbed through skin. Causes moderate eye irritation. Avoid contact with skin, eyes, and clothing. Wash thoroughly with soap and water after handling.

Net Weight: 30g (1.06 Oz)
79434820 01194518 1404119Z

Bayer

CONTAINER HANDLING: If empty do not reuse container. Place in trash or other for recycling if available. If partly filled, call your local solid waste agency or 1-800-4-RECYCLE for disposal instructions. Never place unused product down any drain or outdoor drain. If you have questions regarding the use of this product, call toll free 1-800-541-2897. May stain surfaces, fabrics and/or porous surfaces. Refer to label for complete First Aid, Precautions, First Aid, Precautions, Statements and Storage and Disposal instructions.

Produced for:
Bayer Environmental Science
A Division of Bayer CropScience LP
2 T. W. Alexander Drive
Research Triangle Park, NC 27709
Product of China

2.875"



MAXFORCE® FC SELECT PROFESSIONAL INSECT CONTROL® ROACH KILLER BAIT GEL

Version 3.0 / USA
102000005017

1/9
Revision Date: 11/06/2014
Print Date: 11/06/2014

SECTION 1: IDENTIFICATION OF THE SUBSTANCE/MIXTURE AND OF THE COMPANY/UNDERTAKING

Product identifier

Trade name MAXFORCE® FC SELECT PROFESSIONAL INSECT CONTROL® ROACH KILLER BAIT GEL
Product code (UVP) 05955564
SDS Number 102000005017
EPA Registration No. 432-1259

Relevant identified uses of the substance or mixture and uses advised against

Use Insecticide
Restrictions on use See product label for restrictions.

Information on manufacturer

Bayer Environmental Science
2 T.W. Alexander Drive
Research Triangle PK, NC 27709
United States

Emergency telephone no.

Emergency Telephone Number (24hr/ 7 days) 1-800-334-7577 (24 hours/day)

Product Information Telephone Number 1-800-331-2867

SDS Information or Request SDSINFO.BCS-NA@bayer.com

SECTION 2: HAZARDS IDENTIFICATION

Classification in accordance with regulation HCS 29CFR §1910.1200

This material is not hazardous under the criteria of the Federal OSHA Hazard Communication Standard 29CFR 1910.1200.

Other hazards

No particular hazards known.

SECTION 3: COMPOSITION/INFORMATION ON INGREDIENTS

Hazardous Component Name	CAS-No.	Concentration % by weight
Fipronil	120068-37-3	0.01



MAXFORCE® FC SELECT PROFESSIONAL INSECT CONTROL® ROACH KILLER BAIT GEL

Version 3.0 / USA
102000005017

2/9
Revision Date: 11/06/2014
Print Date: 11/06/2014

SECTION 4: FIRST AID MEASURES

Description of first aid measures

General advice	When possible, have the product container or label with you when calling a poison control center or doctor or going for treatment.
Inhalation	Move to fresh air. If person is not breathing, call 911 or an ambulance, then give artificial respiration, preferably mouth-to-mouth if possible. Call a physician or poison control center immediately.
Skin contact	Take off contaminated clothing and shoes immediately. Wash off immediately with plenty of water for at least 15 minutes. Call a physician or poison control center immediately.
Eye contact	Hold eye open and rinse slowly and gently with water for 15-20 minutes. Remove contact lenses, if present, after the first 5 minutes, then continue rinsing eye. Call a physician or poison control center immediately.
Ingestion	Call a physician or poison control center immediately. Rinse out mouth and give water in small sips to drink. DO NOT induce vomiting unless directed to do so by a physician or poison control center. Never give anything by mouth to an unconscious person. Do not leave victim unattended.

Most important symptoms and effects, both acute and delayed

Symptoms The following symptoms may occur: Restlessness, Anxiety, Tremors

Indication of any immediate medical attention and special treatment needed

Treatment Appropriate supportive and symptomatic treatment as indicated by the patient's condition is recommended. There is no specific antidote.

SECTION 5: FIREFIGHTING MEASURES

Extinguishing media

Suitable Dry chemical, Foam, Water, Carbon dioxide (CO2)
Unsuitable None known.

Special hazards arising from the substance or mixture Dangerous gases are evolved in the event of a fire.

Advice for firefighters

Special protective equipment for fire-fighters Firefighters should wear NIOSH approved self-contained breathing apparatus and full protective clothing.

Further information Keep out of smoke. Fight fire from upwind position. Cool closed containers exposed to fire with water spray. Do not allow run-off from fire fighting to enter drains or water courses.



**MAXFORCE® FC SELECT PROFESSIONAL INSECT
CONTROL® ROACH KILLER BAIT GEL**

Version 3.0 / USA
102000005017

3/9
Revision Date: 11/06/2014
Print Date: 11/06/2014

Flash point	not applicable
Autoignition temperature	no data available
Lower explosion limit	not applicable
Upper explosion limit	not applicable
Explosivity	no data available

SECTION 6: ACCIDENTAL RELEASE MEASURES

Personal precautions, protective equipment and emergency procedures

Precautions Keep unauthorized people away. Isolate hazard area. Avoid contact with spilled product or contaminated surfaces.

Methods and materials for containment and cleaning up

Methods for cleaning up Collect and transfer the product into a properly labelled and tightly closed container. Clean contaminated floors and objects thoroughly, observing environmental regulations.

Additional advice Use personal protective equipment. Do not allow to enter soil, waterways or waste water canal.

Reference to other sections Information regarding safe handling, see section 7.
Information regarding personal protective equipment, see section 8.
Information regarding waste disposal, see section 13.

SECTION 7: HANDLING AND STORAGE

Precautions for safe handling

Advice on safe handling Product will stain porous surfaces.
Use only in area provided with appropriate exhaust ventilation.

Advice on protection against fire and explosion Do not use this product in or on electrical equipment due to the possibility of shock hazard.

Hygiene measures Keep away from food, drink and animal feedingstuffs.
Wash hands thoroughly with soap and water after handling and before eating, drinking, chewing gum, using tobacco, using the toilet or applying cosmetics.

Conditions for safe storage, including any incompatibilities

Requirements for storage areas and containers Keep containers tightly closed in a dry, cool and well-ventilated place.
Keep out of reach of children and animals.



MAXFORCE® FC SELECT PROFESSIONAL INSECT CONTROL® ROACH KILLER BAIT GEL

Version 3.0 / USA
102000005017

4/9
Revision Date: 11/06/2014
Print Date: 11/06/2014

SECTION 8: EXPOSURE CONTROLS/PERSONAL PROTECTION

Control parameters

Components	CAS-No.	Control parameters	Update	Basis
Fipronil (Particulate.)	120068-37-3	50ug/m3 (ST ESL)	02 2013	TX ESL
Fipronil (Particulate.)	120068-37-3	5ug/m3 (AN ESL)	02 2013	TX ESL
Fipronil	120068-37-3	0.035 mg/m3 (TWA)		OES BCS*
Sucrose	57-50-1	10 mg/m3 (TWA)	02 2012	ACGIH
Sucrose (Respirable.)	57-50-1	5 mg/m3 (REL)	2010	NIOSH
Sucrose (Total)	57-50-1	10 mg/m3 (REL)	2010	NIOSH
Sucrose (Total dust.)	57-50-1	15 mg/m3 (PEL)	02 2006	OSHA Z1
Sucrose (Respirable fraction.)	57-50-1	5 mg/m3 (PEL)	02 2006	OSHA Z1
Sucrose (Respirable fraction.)	57-50-1	5 mg/m3 (TWA)	1989	OSHA Z1A
Sucrose (Total dust.)	57-50-1	15 mg/m3 (TWA)	1989	OSHA Z1A
Sucrose (Respirable fraction.)	57-50-1	5 mg/m3 (TWA)	06 2008	TN OEL
Sucrose (Total dust.)	57-50-1	15 mg/m3 (TWA)	06 2008	TN OEL
Sucrose (Particulate.)	57-50-1	50ug/m3 (ST ESL)	02 2013	TX ESL
Sucrose (Particulate.)	57-50-1	5ug/m3 (AN ESL)	02 2013	TX ESL

No control parameters known.

*OES BCS: Internal Bayer CropScience "Occupational Exposure Standard"

Exposure controls

Personal protective equipment

In normal use and handling conditions please refer to the label and/or leaflet. In all other cases the following recommendations would apply.

Respiratory protection

Respiratory protection is not required under anticipated circumstances of exposure.

Hand protection

Protective gloves

Eye protection

Safety glasses with side-shields



**MAXFORCE® FC SELECT PROFESSIONAL INSECT
CONTROL® ROACH KILLER BAIT GEL**

Version 3.0 / USA
102000005017

5/9
Revision Date: 11/06/2014
Print Date: 11/06/2014

Skin and body protection	Wear long-sleeved shirt and long pants and shoes plus socks.
General protective measures	Follow manufacturer's instructions for cleaning/maintaining PPE. If no such instructions for washables, use detergent and warm/tepid water. Keep and wash PPE separately from other laundry.

SECTION 9. PHYSICAL AND CHEMICAL PROPERTIES

Appearance	light brown
Physical State	gel
Odor	sweet
Odour Threshold	no data available
pH	no data available
Vapor Pressure	no data available
Vapor Density (Air = 1)	no data available
Specific Gravity	no data available
Evaporation rate	no data available
Boiling Point	no data available
Melting / Freezing Point	no data available
Water solubility	soluble
Minimum Ignition Energy	not applicable
Decomposition temperature	no data available
Partition coefficient: n-octanol/water	not applicable
Viscosity	55,000 - 180,000 cps at 25 °C 40,000 - 115,000 cps at 25 °C
Flash point	not applicable
Autoignition temperature	no data available
Lower explosion limit	not applicable
Upper explosion limit	not applicable
Explosivity	no data available



**MAXFORCE® FC SELECT PROFESSIONAL INSECT
CONTROL® ROACH KILLER BAIT GEL**

Version 3.0 / USA
102000005017

6/9
Revision Date: 11/06/2014
Print Date: 11/06/2014

SECTION 10: STABILITY AND REACTIVITY

Reactivity

Thermal decomposition	no data available
Chemical stability	Stable under normal conditions.
Possibility of hazardous reactions	No dangerous reaction known under conditions of normal use.
Conditions to avoid	Extremes of temperature and direct sunlight. Exposure to moisture.
Incompatible materials	Strong oxidizing agents, Strong bases, Strong acids
Hazardous decomposition products	No decomposition products expected under normal conditions of use.

SECTION 11: TOXICOLOGICAL INFORMATION

Exposure routes	Eye contact, Skin Absorption, Skin contact, Ingestion
Immediate Effects	
Eye	Moderate eye irritation.
Skin	Harmful if absorbed through skin.

Information on toxicological effects

Acute oral toxicity	LD50 (rat) > 5,000 mg/kg
Acute inhalation toxicity	no data available
Acute dermal toxicity	LD50 (rat) > 5,000 mg/kg
Skin irritation	Slight irritation (rabbit)
Eye irritation	Minimally irritating. (rabbit)
Sensitisation	Non-sensitizing. (guinea pig)

Assessment repeated dose toxicity

Fipronil caused specific target organ toxicity in experimental animal studies in the following organ(s): liver. Fipronil caused neurobehavioral effects and/or neuropathological changes in animal studies.

Assessment Mutagenicity

Fipronil was not mutagenic or genotoxic in a battery of in vitro and in vivo tests.

Assessment Carcinogenicity

Fipronil caused an increased incidence of tumours in rats in the following organ(s): Thyroid. The



**MAXFORCE® FC SELECT PROFESSIONAL INSECT
CONTROL® ROACH KILLER BAIT GEL**

Version 3.0 / USA
102000005017

7/9
Revision Date: 11/06/2014
Print Date: 11/06/2014

mechanism that triggers tumours in rodents and the type of tumours observed are not relevant to humans.

ACGIH

None.

NTP

None.

IARC

None.

OSHA

None.

Assessment toxicity to reproduction

Fipronil caused reproduction toxicity in a two-generation study in rats only at dose levels also toxic to the parent animals. The reproduction toxicity seen with Fipronil is related to parental toxicity.

Assessment developmental toxicity

Fipronil did not cause developmental toxicity in rats and rabbits.

Further information

Acute toxicity studies have been bridged from a similar formulation(s).
The non-acute information pertains to the active ingredient(s).

SECTION 12: ECOLOGICAL INFORMATION

Toxicity to fish	LC50 (Oncorhynchus mykiss (rainbow trout)) 0.25 mg/l Exposure time: 96 h The value mentioned relates to the active ingredient fipronil.
Toxicity to aquatic invertebrates	EC50 (Daphnia magna (Water flea)) 0.19 mg/l Exposure time: 48 h The value mentioned relates to the active ingredient fipronil.
Toxicity to aquatic plants	EC50 (Scenedesmus subspicatus) 0.068 mg/l Exposure time: 96 h The value mentioned relates to the active ingredient fipronil.
Biodegradability	Fipronil: ; not rapidly biodegradable
Koc	Fipronil: Koc: 427 - 1278
Bioaccumulation	Fipronil: Bioconcentration factor (BCF) 321; Does not bioaccumulate.
Mobility in soil	Fipronil: Slightly mobile in soils
Environmental precautions	Do not allow to get into surface water, drains and ground water. Do not contaminate surface or ground water by cleaning equipment or



**MAXFORCE® FC SELECT PROFESSIONAL INSECT
CONTROL® ROACH KILLER BAIT GEL**

Version 3.0 / USA
102000005017

8/9
Revision Date: 11/06/2014
Print Date: 11/06/2014

disposal of wastes, including equipment wash water.
Apply this product as specified on the label.

SECTION 13: DISPOSAL CONSIDERATIONS

Waste treatment methods

Product	Follow container label instructions for disposal of wastes generated during use in compliance with the product label. Never place unused product down any indoor or outdoor drain.
Contaminated packaging	Do not re-use empty containers. Wrap and discard in trash. Follow advice on product label and/or leaflet.
RCRA Information	Characterization and proper disposal of this material as a special or hazardous waste is dependent upon Federal, State and local laws and are the user's responsibility. RCRA classification may apply.

SECTION 14: TRANSPORT INFORMATION

According to national and international transport regulations this material is not classified as dangerous goods / hazardous material.

SECTION 15: REGULATORY INFORMATION

EPA Registration No. 432-1259
US Federal Regulations
TSCA list
None.
US. Toxic Substances Control Act (TSCA) Section 12(b) Export Notification (40 CFR 707, Subpt D)
None.
SARA Title III - Section 302 - Notification and Information
None.
SARA Title III - Section 313 - Toxic Chemical Release Reporting
None.
US States Regulatory Reporting
CA Prop65
This product does not contain any substances known to the State of California to cause cancer.

This product does not contain any substances known to the State of California to cause reproductive harm.

US State Right-To-Know Ingredients
None.



**MAXFORCE® FC SELECT PROFESSIONAL INSECT
CONTROL® ROACH KILLER BAIT GEL**

Version 3.0 / USA
102000005017

9/9
Revision Date: 11/06/2014
Print Date: 11/06/2014

Canadian Regulations
Canadian Domestic Substance List
None.

Environmental
CERCLA
None.

Clean Water Section 307 Priority Pollutants
None.

Safe Drinking Water Act Maximum Contaminant Levels
None.

EPA/FIFRA Information:

This chemical is a pesticide product registered by the Environmental Protection Agency and is subject to certain labeling requirements under federal pesticide law. These requirements differ from the classification criteria and hazard information required for safety data sheets, and for workplace labels of non-pesticide chemicals. Following is the hazard information required on the pesticide label:

Signal word: Caution!

Hazard statements: Keep exposed gel away from open food and food contact surfaces.
Harmful if absorbed through skin.
Moderate eye irritation.
Avoid contact with skin, eyes and clothing.

SECTION 16: OTHER INFORMATION

NFPA 704 (National Fire Protection Association):

Health - 1 Flammability - 1 Instability - 0 Others - none

HMIS (Hazardous Materials Identification System, based on the Third Edition Ratings Guide)

Health - 1 Flammability - 1 Physical Hazard - 0 PPE -

0 = minimal hazard, 1 = slight hazard, 2 = moderate hazard, 3 = severe hazard, 4 = extreme hazard

Reason for Revision: Revised according to the current OSHA Hazard Communication Standard (29CFR1910.1200)

Revision Date: 11/06/2014

This information is provided in good faith but without express or implied warranty. The customer assumes all responsibility for safety and use not in accordance with label instructions. The product names are registered trademarks of Bayer.



MAXFORCE® FC SELECT PROFESSIONAL INSECT CONTROL® ROACH KILLER BAIT GEL

Versión 2.0 / USA
102000005017

1/10
Fecha de revisión: 11/06/2014
Fecha de impresión: 11/06/2014

SECCIÓN 1: IDENTIFICACIÓN DE LA SUSTANCIA O LA MEZCLA Y DE LA SOCIEDAD O LA EMPRESA

Identificador del producto

Nombre comercial MAXFORCE® FC SELECT PROFESSIONAL INSECT CONTROL® ROACH KILLER BAIT GEL

Código del producto (UVP) 05955564

Número MSDS 102000005017

N° de Registro (EPA) 432-1259

Usos pertinentes identificados de la sustancia o de la mezcla y usos desaconsejados

Uso Insecticida

Restricciones de uso Para restricciones ver etiqueta del producto.

Información sobre el fabricante

Bayer Environmental Science
2 T.W. Alexander Drive
Research Triangle PK, NC 27709
Estados Unidos

Teléfono de emergencia

Teléfono de emergencia (24 horas/ 7 días) 1-800-334-7577 (24 hours/day)

Teléfono de Información de Producto 1-800-331-2867

Solicitud de SDS o de información relacionada SDSINFO.BCS-NA@bayer.com

SECCIÓN 2: IDENTIFICACIÓN DE LOS PELIGROS

Clasificación según el Reglamento HCS 29CFR §1910.1200

Este material no es peligroso bajo los criterios de los Estándares de Comunicación de Riesgos Federales de OSHA 29CFR 1910.1200.

Otros peligros

No se conocen peligros especiales.

SECCIÓN 3: COMPOSICIÓN/INFORMACIÓN SOBRE LOS COMPONENTES

Nombre de componentes peligrosos	No. CAS	Concentración % en peso
Fipronil	120068-37-3	0.01



**MAXFORCE® FC SELECT PROFESSIONAL INSECT
CONTROL® ROACH KILLER BAIT GEL**

Versión 2.0 / USA
102000005017

2/10
Fecha de revisión: 11/06/2014
Fecha de impresión: 11/06/2014

SECCIÓN 4: PRIMEROS AUXILIOS

Descripción de los primeros auxilios

- Consejo general** Si es posible, tener el envase del producto o la etiqueta a mano para la llamar un centro de control de envenenamiento o un médico o para ir al tratamiento.
- Inhalación** Trasladar al aire libre. Si ha parado de respirar, llamar al 911 o una ambulancia. Después, hacer la respiración artificial, de preferencia boca a boca, si es posible. Llamar inmediatamente a un médico o a un centro de información toxicológica.
- Contacto con la piel** Qúitese inmediatamente la ropa y zapatos contaminados. Lavar inmediatamente con abundante agua al menos durante 15 minutos. Llamar inmediatamente a un médico o a un centro de información toxicológica.
- Contacto con los ojos** Mantener el ojo abierto y enjuagar suavemente y lentamente durante 15 - 20 minutos. Después de los primeros 5 minutos retirar las lentillas, si presentes, y continuar enjuagando el ojo. Llamar inmediatamente a un médico o a un centro de información toxicológica.
- Ingestión** Llamar inmediatamente a un médico o a un centro de información toxicológica. Enjuagar la boca y dar a beber agua en pequeños sorbos. NO provocar el vómito al menos de hacerlo bajo el control de un médico o del centro de control de envenenamiento. Nunca debe administrarse nada por la boca a una persona inconsciente. No dejar el afectado sin vigilancia.

Principales síntomas y efectos, agudos y retardados

- Síntomas** Se pueden presentar los siguientes síntomas:, Desasosiego, Ansiedad, Temblores

Indicación de toda atención médica y de los tratamientos especiales que deban dispensarse inmediatamente

- Tratamiento** Se recomienda el tratamiento sintomático y adecuado a la condición del paciente. No existe antídoto específico.

SECCIÓN 5: MEDIDAS DE LUCHA CONTRA INCENDIOS

Medios de extinción

- Adecuados** Producto químico en polvo, Espuma, Agua, Dióxido de carbono (CO2)
- Inadecuados** Ninguna conocida.



**MAXFORCE® FC SELECT PROFESSIONAL INSECT
CONTROL® ROACH KILLER BAIT GEL**

Versión 2.0 / USA
102000005017

3/10
Fecha de revisión: 11/06/2014
Fecha de impresión: 11/06/2014

Peligros específicos derivados de la sustancia o la mezcla	En caso de incendio se formarán gases peligrosos.
Recomendaciones para el personal de lucha contra incendios	
Equipo de protección especial para el personal de lucha contra incendios	Los bomberos deberán utilizar un equipo de respiración autónomo aprobado por NIOSH y ropa protectora adecuada.
Información adicional	Mantenerse alejado del humo. Luchar el incendio del lado opuesto al viento. Enfriar los contenedores cerrados expuestos al fuego con agua pulverizada. Impedir que las aguas de extinción de incendios alcancen el alcantarillado o los cursos de agua.
Punto de inflamación	no aplicable
Temperatura de auto-inflamación	Sin datos disponibles
Límites inferior de explosividad	no aplicable
Límites superior de explosividad	no aplicable
Explosividad	Sin datos disponibles

SECCIÓN 6: MEDIDAS EN CASO DE VERTIDO ACCIDENTAL

Precauciones personales, equipo de protección y procedimientos de emergencia

Precauciones	Mantener alejadas a personas no autorizadas. Aislar la zona de peligro. Evitar el contacto con los productos derramados o las superficies contaminadas.
Métodos y material de contención y de limpieza	
Métodos de limpieza	Recoger y traspasar el producto a contenedores correctamente etiquetados y herméticamente cerrados. Observando las normas de protección del medio ambiente, limpiar a fondo todos los utensilios y el suelo contaminados.
Consejos adicionales	Utilícese equipo de protección individual. Impedir que el producto penetre en el suelo, los cursos de agua o el alcantarillado.
Referencia a otras secciones	Indicaciones relativas a manipulación segura, ver sección 7. Indicaciones relativas al equipo de protección individual, ver sección 8. Indicaciones relativas a eliminación de residuos, ver sección 13.

SECCIÓN 7: MANIPULACIÓN Y ALMACENAMIENTO



**MAXFORCE® FC SELECT PROFESSIONAL INSECT
CONTROL® ROACH KILLER BAIT GEL**

Versión 2.0 / USA
102000005017

4/10
Fecha de revisión: 11/06/2014
Fecha de impresión: 11/06/2014

Precauciones para una manipulación segura

Consejos para una manipulación segura

El producto teñe las superficies porosas.

Utilizar solamente en áreas provistas de ventilación y extracción apropiadas.

Indicaciones para la protección contra incendio y explosión

No usar este producto en ou sobre equipo eléctrico por peligro posible de un choque.

Medidas de higiene

Manténgase separado de alimentos, bebidas y piensos.
Lavarse las manos cuidadosamente con agua y jabón antes de comer, beber, mascar chicle, consumir tabaco, ir al aseo o aplicar cosméticos.

Condiciones de almacenamiento seguro, incluidas posibles incompatibilidades

Exigencias técnicas para almacenes y recipientes

Cerrar los recipientes herméticamente y mantenerlos en lugar seco, fresco y bien ventilado. Mantener fuera del alcance de los niños y de los animales.

SECCIÓN 8: CONTROLES DE EXPOSICIÓN/PROTECCIÓN INDIVIDUAL

Parámetros de control

Componentes	No. CAS	Parámetros de control	Actual.	Base
Fipronil (Particulado.)	120068-37-3	50ug/m3 (ST ESL)	02 2013	TX ESL
Fipronil (Particulado.)	120068-37-3	5ug/m3 (AN ESL)	02 2013	TX ESL
Fipronil	120068-37-3	0.035 mg/m ³ (MPT)		OES BCS*
Sacarosa	57-50-1	10 mg/m ³ (TWA)	02 2012	ACGIH
Sacarosa (Respirable.)	57-50-1	5 mg/m ³ (REL)	2010	NIOSH
Sacarosa (Total)	57-50-1	10 mg/m ³ (REL)	2010	NIOSH
Sacarosa (Polvo total.)	57-50-1	15 mg/m ³ (PEL)	02 2006	OSHA Z1
Sacarosa (Parte (fracción) respirable.)	57-50-1	5 mg/m ³ (PEL)	02 2006	OSHA Z1
Sacarosa (Parte (fracción) respirable.)	57-50-1	5 mg/m ³ (TWA)	1989	OSHA Z1A
Sacarosa (Polvo total.)	57-50-1	15 mg/m ³ (TWA)	1989	OSHA Z1A
Sacarosa (Parte (fracción) respirable.)	57-50-1	5 mg/m ³ (TWA)	06 2008	TN OEL
Sacarosa (Polvo total.)	57-50-1	15 mg/m ³ (TWA)	06 2008	TN OEL



**MAXFORCE® FC SELECT PROFESSIONAL INSECT
CONTROL® ROACH KILLER BAIT GEL**

Versión 2.0 / USA
102000005017

5/10
Fecha de revisión: 11/06/2014
Fecha de impresión: 11/06/2014

Sacarosa (Particulado.)	57-50-1	50ug/m3 (ST ESL)	02 2013	TX ESL
Sacarosa (Particulado.)	57-50-1	5ug/m3 (AN ESL)	02 2013	TX ESL

Sin valores límite de exposición conocidos.

*OES BCS: Valor límite de exposición laboral interna Bayer CropScience (Occupational Exposure Standard)

Controles de la exposición

Protección personal

En condiciones normales de uso y manipulación referirse a las instrucciones de la etiqueta y/o el prospecto. En el resto de casos deberán aplicarse las siguientes recomendaciones.

Protección respiratoria

No es necesaria protección respiratoria en las condiciones de exposición previstas.

Protección de las manos

Guantes protectores

Protección de los ojos

Gafas protectoras con cubiertas laterales

Protección de la piel y del cuerpo

Llevar camisa de manga larga, pantalón, zapatos y calcetines.

Medidas generales de protección

Limpiar y mantener el equipo de protección individual siguiendo las instrucciones del fabricante. Si no hay instrucciones para el lavado utilizar un detergente y agua caliente.
Guardar y lavar el equipo de protección individual separado de la otra ropa.

SECCION 9. PROPIEDADES FÍSICAS Y QUÍMICAS

Aspecto	marrón claro
Estado físico	gel
Olor	dulce
Umbral olfativo	Sin datos disponibles
pH	Sin datos disponibles
Presión de vapor	Sin datos disponibles
Densidad de vapor (Aire = 1)	Sin datos disponibles
Peso específico	Sin datos disponibles
Tasa de evaporación	Sin datos disponibles
Temperatura de ebullición	Sin datos disponibles
Temperatura de fusión / congelación	Sin datos disponibles



**MAXFORCE® FC SELECT PROFESSIONAL INSECT
CONTROL® ROACH KILLER BAIT GEL**

Versión 2.0 / USA
102000005017

6/10
Fecha de revisión: 11/06/2014
Fecha de impresión: 11/06/2014

Solubilidad en agua	soluble
Energía mínima de ignición	no aplicable
Temperatura de descomposición	Sin datos disponibles
Coefficiente de reparto n-octanol/agua	no aplicable
Viscosidad	55,000 - 180,000 cps a 25 °C 40,000 - 115,000 cps a 25 °C
Punto de inflamación	no aplicable
Temperatura de auto-inflamación	Sin datos disponibles
Límites inferior de explosividad	no aplicable
Límites superior de explosividad	no aplicable
Explosividad	Sin datos disponibles

SECCIÓN 10: ESTABILIDAD Y REACTIVIDAD

Reactividad

Descomposición térmica	Sin datos disponibles
Estabilidad química	Estable en condiciones normales.
Posibilidad de reacciones peligrosas	No se conocen reacciones peligrosas bajo condiciones de uso normales.
Condiciones que deben evitarse	Temperaturas extremas y luz directa del sol. Exposición a la humedad.
Materiales incompatibles	Agentes oxidantes fuertes, Bases fuertes, Ácidos fuertes
Productos de descomposición peligrosos	No se esperan productos de descomposición bajo condiciones normales de uso.

SECCIÓN 11: INFORMACIÓN TOXICOLÓGICA

Vía de exposición	Contacto con los ojos, Absorción de la piel, Contacto con la piel, Ingestión
Efectos inmediatos	
Ojo	Moderada irritación de los ojos.



**MAXFORCE® FC SELECT PROFESSIONAL INSECT
CONTROL® ROACH KILLER BAIT GEL**

Versión 2.0 / USA
102000005017

7/10
Fecha de revisión: 11/06/2014
Fecha de impresión: 11/06/2014

Piel Nocivo si es absorbido por la piel.

Información sobre los efectos toxicológicos

Toxicidad oral aguda	DL50 (rata) > 5,000 mg/kg
Toxicidad aguda por inhalación	Sin datos disponibles
Toxicidad cutánea aguda	DL50 (rata) > 5,000 mg/kg
Irritación de la piel	Ligera irritación (conejo)
Irritación ocular	Insignificamente irritante. (conejo)
Sensibilización	No sensibilizante. (conejillo de indias)

Evaluación toxicidad por dosis repetidas

Fipronil causó toxicidad en órganos diana específicos en estudios experimentales en animales en el(los) siguiente(s) órgano(s): hígado. Fipronil produjo efectos neurocomportamentales y/o cambios neuropatológicos en ensayos en animales.

Evaluación de la mutagenicidad

Fipronil no fue mutagénico o genotóxico en una batería de estudios in vitro e in vivo.

Evaluación de la carcinogénesis

Fipronil causó un aumento en la incidencia de tumores en ratas en el(los) siguiente(s) órgano(s): Tiroides. El mecanismo de acción responsable de producir en los roedores y el tipo de tumores observados no están aplicable para el hombre.

ACGIH

Ninguno(a).

NTP

Ninguno(a).

IARC

Ninguno(a).

OSHA

Ninguno(a).

Evaluación de la toxicidad para la reproducción

Fipronil causa toxicidad a la reproducción en un estudio de dos generaciones en ratas sólo a niveles de dosis tóxicos para en los animales parentales. La toxicidad reproductiva observada con Fipronil se relaciona con su toxicidad para los padres.

Evaluación de toxicidad del desarrollo

Fipronil no resultó una sustancia tóxica para el desarrollo en ratas y conejos.

Información adicional



MAXFORCE® FC SELECT PROFESSIONAL INSECT CONTROL® ROACH KILLER BAIT GEL

Versión 2.0 / USA
102000005017

8/10
Fecha de revisión: 11/06/2014
Fecha de impresión: 11/06/2014

Los estudios de toxicidad aguda han sido traídos de una(s) formulación(es) similar(es).
La información no-aguda corresponde a las materia(s) activa(s).

SECCIÓN 12: INFORMACIÓN ECOLÓGICA

Toxicidad para los peces	CL50 (Oncorhynchus mykiss (Trucha irisada)) 0.25 mg/l Tiempo de exposición: 96 h El valor indicado corresponde a la materia activa técnica fipronil.
Toxicidad para los invertebrados acuáticos	CE50 (Daphnia magna (Pulga acuática)) 0.19 mg/l Tiempo de exposición: 48 h El valor indicado corresponde a la materia activa técnica fipronil.
Toxicidad para las plantas acuáticas	CE50 (Scenedesmus subspicatus) 0.068 mg/l Tiempo de exposición: 96 h El valor indicado corresponde a la materia activa técnica fipronil.
Biodegradabilidad	Fipronil: ; no es rápidamente biodegradable
Koc	Fipronil: Koc: 427 - 1278
Bioacumulación	Fipronil: Factor de bioconcentración (FBC) 321; No debe bioacumularse.
Movilidad en el suelo	Fipronil: Ligeramente móvil en suelo
Precauciones relativas al medio ambiente	Evitar que penetre en las aguas superficiales, el alcantarillado y aguas subterráneas. No contaminar las aguas superficiales o subterráneas por limpiando el equipo o eliminación de los residuos, incluso el agua del lavado del equipo. Aplicar este producto como especificado en la etiqueta.

SECCIÓN 13: CONSIDERACIONES RELATIVAS A LA ELIMINACIÓN

Métodos para el tratamiento de residuos

Producto	Seguir las instrucciones sobre la etiqueta para la eliminación de desechos generados por uso como se indica. No poner nunca el producto no usado en los desagües adentro o afuera.
Envases contaminados	No reutilizar los recipientes vacíos. Envolver y echar en la basura. Seguir las indicaciones de la etiqueta y/o el prospecto del producto.



**MAXFORCE® FC SELECT PROFESSIONAL INSECT
CONTROL® ROACH KILLER BAIT GEL**

Versión 2.0 / USA
102000005017

9/10
Fecha de revisión: 11/06/2014
Fecha de impresión: 11/06/2014

Información RCRA

La descripción y la eliminación conforme a los hechos de este material como residuo especial o peligroso son dependientes de las leyes federales y locales y están en la responsabilidad de los usuarios. La RCRA clasificación se puede aplicar.

SECCIÓN 14: INFORMACIÓN RELATIVA AL TRANSPORTE

Se debe utilizar la clasificación para el transporte que se muestra a continuación para cumplir con las regulaciones de los Estados Unidos. Si usted no entiende esta clasificación busque a alguien que se la explique en detalle.

De acuerdo con los reglamentos nacionales e internacionales de transporte este material no está clasificado como mercancía peligrosa / material peligroso.

SECCIÓN 15: INFORMACIÓN REGLAMENTARIA

N° de Registro (EPA) 432-1259

Reglamentaciones Federales de los Estados Unidos

Lista TSCA

Ninguno(a).

EE.UU. Programa de Toxicología Nacional (NTP) Informe sobre los Productos Carcinógenos

Ninguno(a).

SARA Título III - Sección 302 - Notificación y Información

Ninguno(a).

SARA Título III - Sección 313 - Estatuto de la Liberación Tóxica Química

Ninguno(a).

Informaciones reglamentarias de los Estados Unidos

CA Prop65

Este producto no contiene ningún producto químico conocido en el estado de California por provocar cáncer.

Este producto no contiene ningún producto químico conocido en el estado de California por provocar un riesgo para la reproducción.

Componentes de declaración obligatoria en los Estados Unidos

Ninguno(a).

Regulaciones Canadienses

Lista interior canadiense de sustancias

Ninguno(a).

Medio Ambiente

CERCLA

Ninguno(a).



**MAXFORCE® FC SELECT PROFESSIONAL INSECT
CONTROL® ROACH KILLER BAIT GEL**

Versión 2.0 / USA
102000005017

10/10
Fecha de revisión: 11/06/2014
Fecha de impresión: 11/06/2014

Agua Limpia Sección 307 Prioridad Contaminantes

Ninguno(a).

Ley Enmienda del Agua Potable Segura Límite de Contaminación

Ninguno(a).

Información EPA/FIFRA:

Este producto químico es un plaguicida registrado por la Agencia de Protección Ambiental y está sujeto a ciertos requisitos de etiquetado de acuerdo a la legislación federal de plaguicidas. Estos requisitos difieren de los criterios de clasificación y de la información sobre peligros exigida para las hojas de datos de seguridad y para las etiquetas de manipulación de productos químicos no fitosanitarios. La información sobre peligros exigida en la etiqueta del plaguicida es la siguiente:

Palabra de advertencia: Atención!

Indicaciones de peligro: Mantener el gel expuesto alejado a los alimentos abiertos y a la superficie de contacto con alimentos.
Nocivo si es absorbido por la piel.
Moderada irritación de los ojos.
Evitar el contacto con la piel, ojos y ropa.

SECCIÓN 16: OTRA INFORMACIÓN

NFPA 704 (National Fire Protection Association):

Salud - 1 Inflamabilidad - 1 Inestabilidad - 0 Otro - ninguno(a)

HMIS (Hazardous Materials Identification System, based on the Third Edition Ratings Guide)

Salud - 1 Inflamabilidad - 1 Peligro Físico - 0 PPE -

0 = peligro mínima, 1 = peligro pequeño, 2 = peligro moderada, 3 = peligro grave, 4 = peligro extremo

Razon para la revisión: Revisado según el Estándar OSHA de Comunicación de Riesgos (29CFR1910.1200)

Fecha de revisión: 11/06/2014

Estas informaciones son puestas a la disposición de buena fe, pero sin garantía, implicada o expresada. El comprador asume toda la responsabilidad para la seguridad y el uso disconforme a las instrucciones sobre la etiqueta.