

Tempo dust



Tempo[®]
1% DUST

INSECTICIDE

Ready To Use

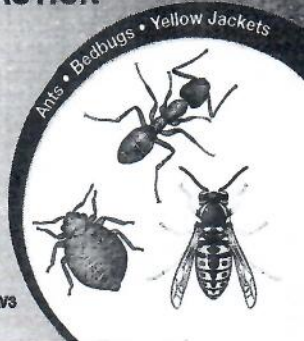
For Use Only By Pest Management Professionals and Commercial Applicators

Active Ingredient:
Cyfluthrin, cyanofluoro-3-phenoxyphenyl-
methyl 3-(2,2-dichloroethenyl)-2,2-
dimethylcyclopropane-carboxylate..... 98%

OTHER Ingredients:..... 2%
Total:..... 100%

EPA Reg. No. 432-1373

STOP - Read the label before use.
KEEP OUT OF REACH OF CHILDREN
CAUTION



Net Weight
1.25 Lbs
04325140
05976935C 110830AV3

FIRST AID	
If in eyes	<ul style="list-style-type: none"> • Hold eye open and rinse slowly and gently with water for 15 to 20 minutes. Remove contact lenses, if present, after the first 5 minutes, then continue rinsing eye. • Call a poison control center or doctor for treatment advice.
If swallowed	<ul style="list-style-type: none"> • Call a poison control center or doctor immediately for treatment advice. • Have person sip a glass of water if able to swallow. • Do not induce vomiting unless told to by a poison control center or doctor. • Do not give anything by mouth to an unconscious person.
If inhaled	<ul style="list-style-type: none"> • Move person to fresh air. • If person is not breathing, call 911 or an ambulance, then give artificial respiration, preferably mouth-to-mouth if possible. • Call a poison control center or doctor for further treatment advice.
If on skin	<ul style="list-style-type: none"> • Take off contaminated clothing. • Rinse skin immediately with plenty of water for 15 to 20 minutes. • Call a poison control center or doctor for treatment advice.
<p>Have the product container or label with you when calling a poison control center or doctor or going for treatment. The Bayer Environmental Science Emergency Response Telephone No. is 1-800-334-7577.</p>	
<p>Note To Physician: No specific antidote is available. Treat the patient symptomatically.</p>	

PRECAUTIONARY STATEMENTS

HAZARDS TO HUMANS AND DOMESTIC ANIMALS

CAUTION: Causes moderate eye irritation. Harmful if swallowed, inhaled or absorbed through the skin. Do not get into eyes, on skin, or on clothing. Avoid breathing dust. If clothing becomes contaminated, remove and wash before reuse. Wash hands thoroughly with soap and warm water after handling.

ENVIRONMENTAL HAZARDS

This pesticide is toxic to fish and other aquatic organisms. Do not apply directly to water, or to areas where surface water is present or to intertidal areas below the mean high water mark. Apply this product only as specified on this label.

To protect the environment, do not allow pesticide to enter or run off into storm drains, drainage ditches, gutters or surface waters. Applying this product in calm weather when rain is not predicted for the next 24 hours will help to ensure that wind or rain does not blow or wash pesticide off the treatment area.

PRO FACTS	
• Ready-to-use	• Low-odor • Non-staining
TEMPO 1% DUST Insecticide Ready To Use	Contains 1% cyfluthrin
CONTROLS	<ul style="list-style-type: none"> • Ants, cockroaches, and other crawling pests • Bees and wasps • Pantry and stored product pests • Wood-infesting pests • For specific insects, see inside label
WHERE TO APPLY	In and around buildings and structures
COVERAGE	Treats up to 2,500 square feet
HOW TO APPLY	Directly in voids, cracks and crevices. For bees, wasps and ant mounds, see directions inside. Use appropriate dusting or injection equipment.
RE-APPLY	Every 7 to 10 days, if needed
QUESTIONS	For questions or comments, call toll-free 1-800-331-2867

DIRECTIONS FOR USE

It is a violation of Federal law to use this product in a manner inconsistent with its labeling.

APPLICATION RESTRICTIONS

Do not water the treated area to the point of run-off.

Do not make applications during rain.

Do not apply directly to sewers or drains, or to any area like a gutter where drainage to sewers, storm drains, water bodies, or aquatic habitat can occur, except as directed by this label.

PESTS

For residual pest control in and around buildings, structures, non-food/feed areas of food/feed handling establishments and modes of transport. This includes houses, hotels, motels and other non-food areas of stores, warehouses, hospitals, food processing facilities, and modes of transport. For a list of common facilities where this product may be used, see appendix.

General Household Pests	
Crawling Pests Ants (except Pharaoh) Bed bugs Boxelder bugs Carpet beetles Centipedes Clothes moths Cockroaches Crickets Earwigs Firebrats Ground beetles	Millipedes Pillbugs Scorpions Silverfish Sowbugs Spiders Flying Pests Bees Hornets Wasps Yellow jackets
Pantry and Stored Product Pests	
Beetles (exposed adults & immature stages) Cadelle Cigarette Confused flour Darkling Dermestid Granary weevil Hide Larder Leather	Lesser grain borer Lesser mealworm Merchant grain Mealworm Red flour Rice weevil Sawtoothed grain Warehouse Moths Indian meal Mediterranean flour
Wood-Infesting Pests*	
Beetles Ambrosia Deathwatch False powderpost Old house borer Powderpost	Carpenter ants Carpenter bees Termites Subterranean Formosan Drywood
<p>*The purpose of such applications of TEMPO 1% Dust for termites is to kill workers or winged reproductive forms which may be present in treated channels at the time of treatment. Such applications are not a substitute for mechanical alteration, soil treatment, or foundation treatment, but merely a supplement. This product is not recommended as sole protection against termites. For active indoor termite infestations get a professional inspection.</p>	

WHERE TO APPLY	<ul style="list-style-type: none"> • Apply where pests have been seen or found or can find shelter. • In living areas, avoid deposits on exposed surfaces and avoid introducing the dust into the air. Apply in wall voids, cracks and crevices; in or behind base boards, service ducts, false floors and ceilings; around electrical entrances, water and sewer pipe entrances; under and behind cabinets, refrigerators, and sinks; in equipment legs and bases; around window and door frames; in attics and crawl spaces. • For specific sites, see appendix.
USE RATE	0.5 lb to 1 lb of TEMPO 1% Dust per 1000 square feet.
HOW TO APPLY (also see APPLICATION FOR PESTS)	Apply directly into voids, cracks and crevices using hand or power dusters or other suitable equipment. Apply lightly and uniformly.
WHEN TO APPLY	<ul style="list-style-type: none"> • When pests are seen or found. • Every 7 to 10 days, if needed.
RESTRICTIONS	<ul style="list-style-type: none"> • In living areas, avoid deposits on exposed surfaces and avoid introducing the dust into the air. • Do not use in aircraft cabins. • Do not apply in any rooms while the elderly or infirm are present. • Do not apply in occupied classrooms. • Do not apply to clothing. • Do not apply to food/feed areas of commercial food/feed handling establishments, restaurants, or other commercial establishments where food/feed is commercially prepared, processed or served. • Do not apply to animal feedstuffs or watering equipment.

APPLICATION FOR PESTS	
CRAWLING PESTS	
Ants	Apply to voids, cracks and crevices in and around doors and windows, baseboard cracks, and other places where ants enter structures.
Bed bugs	Apply to areas such as mattress folds and tufts, spring coils, cracks or hollow places in bed frames, furniture upholstery, and picture frame moldings. Let powder remain on treated surfaces for 4 to 6 hours, then vacuum the powder thoroughly, dispose of the vacuum bag properly, and place clean linens on the bed.
Carpet beetles	Apply under edges of floor coverings, baseboard cracks, under rugs and furniture, and in cracks and crevices in closets.
Clothes moths and silverfish	Apply to cracks and crevices in closets and other storage areas. This is an adjunct treatment and will not control moth larvae and silverfish already on the clothes. Do not apply to clothing.
Fire ants (including Red harvester ants, and Pavement ants)	USE RATE: 2 to 6 teaspoons of TEMPO 1% Dust per mound. Avoid disturbing the mound before applying. If possible, treat all colonies in the area. Distribute the product evenly over each mound and around the perimeter of the mound (about 18 inches from the outer edge); use the higher rates for larger mounds. For best results, water mounds gently after applying. High water pressure will cause the ants to move the mound. Treat new mounds as they appear.
FLYING PESTS	
Bees Hornets Wasps Yellow jackets	Thoroughly dust nests and entrances and surrounding areas. To treat nests in wall voids, drill a hole in the area, dust entrance and surrounding areas. Wear protective clothing if necessary to avoid stings. You may also help avoid stings by treating wasp and bee nests in the evening when the insects are less active and are inside the nest. For best results, check nests within one or two days to ensure complete kill. Remove and

	destroy treated nests to prevent emergence of newly hatched insects, secondary pest problems, and possible staining from honey. If removal is not possible, retreat the nest, if necessary.
PANTRY & STORED PRODUCT PESTS	
Beetles and Moths	Clean area thoroughly, removing infested foodstuffs and all utensils, uncovered foodstuffs (or any with opened package), shelf paper and other objects. Apply in voids, cracks and crevices behind and under cupboards, food storage areas, and cabinets. Do not apply directly on food, utensils, or food storage shelves.
WOOD-INFESTING PESTS	
Termites and wood-infesting beetles	Apply to voids and galleries in damaged wood, in spaces between wooden structural members, and between the sill plate and foundation where wood is vulnerable. For inaccessible areas, drill into the damaged wood or wall voids and then inject dust using a suitable directional injector. Note that drilling and treating may not give complete coverage of infested and vulnerable voids or galleries.
Termite carton nests	Termite carton nests in building voids may be injected with a pointed injection tool at varying depths. For best results, remove carton nests material when possible.
Above-ground termites and carpenter ants	For control inside trees, utility poles, fencing and decking materials and similar structural members, drill to find the interior infested cavity and inject dust.
Carpenter ants	Treat wall voids by access around electrical entrances, water lines or similar openings. Apply to voids, cracks and crevices in and around doors and windows, under fascia boards, top of sill plate, cracks and crevices in crawl space, under shingles, behind gutters, and other areas where carpenter ants may enter.
Carpenter bees	Apply directly into gallery entrance holes. Leave entrance holes open for 24 hours after treatment to be sure that returning bees are also killed. When there is no activity, seal the hole with a suitable sealant.

STORAGE AND DISPOSAL

Do not contaminate water, food, or feed by storage or disposal.

Storage:	<ul style="list-style-type: none">• Store in a cool, dry place and in such a manner as to prevent cross contamination with other pesticides, fertilizers, food, or feed.• Store in original containers and out of the reach of children, preferably in a locked storage area.• Handle and open container in a manner as to prevent spillage.
Pesticide Disposal:	<ul style="list-style-type: none">• Pesticide wastes are hazardous. Improper disposal of excess pesticide is a violation of Federal law. If these wastes cannot be disposed of by use according to label instructions, contact your State Pesticide or Environmental Control Agency, or the Hazardous Waste representative at the nearest EPA Regional Office for guidance.
Container Disposal:	<ul style="list-style-type: none">• Non-refillable container. Do not reuse or refill this container. Offer for recycling, if available. Puncture and dispose of in a sanitary landfill, or by other approved State and local procedures.• (For Homeowner) Non-refillable container. Do not reuse or refill this container. Offer for recycling, if available. If empty: Place in trash or offer for recycling if available. If partly filled: Call your local solid waste agency for disposal instructions. Never place unused product down an indoor or outdoor drain.
Spills:	<ul style="list-style-type: none">• If the container is leaking or material is spilled for any reason or cause, carefully sweep material into a pile. Refer to Precautionary Statements on label for hazards associated with the handling of this material.• Do not walk through spilled material.• Dispose of pesticide as directed above.• Keep unauthorized people away.• You may contact the Bayer Environmental Science Emergency Response Team for decontamination procedures or any other assistance at 1-800-334-7577.

Appendix
FOR RESIDUAL PEST CONTROL IN AND AROUND BUILDINGS
Permitted areas of use include, but are not limited to:
<ul style="list-style-type: none"> animal quarters and kennels apartment buildings bakeries bottling facilities breweries cafeterias candy plants cereal processing and manufacturing plants correctional facilities dairies and dairy product processing plants day care centers frozen food plants grain mills granaries greenhouses (structures only) grocery stores and supermarkets hospitals (see restrictions) hotels and motels houses industrial buildings and installations kitchens laboratories livestock housing structures manufacturing establishments mausoleums pet kennels meat and produce canneries mobile homes and recreational vehicles nursing homes (see restrictions) pickle factories restaurants schools (see restrictions) spice plants stores and institutions theaters utility vaults and conduits warehouses wineries and similar structures zoos transportation vessels such as aircraft (see restrictions), buses, trucks, trailers, rail cars, and marine vessels

FOR FOOD/FEED HANDLING ESTABLISHMENTS

TEMPO 1% Dust applications are permitted in non-food/feed areas of food handling establishments only as a void or crack and crevice treatment. It is not permitted in the food/feed areas of food/feed handling establishments. Food/feed handling establishments are defined as places other than private residences where exposed food/feed is held, processed, prepared or served. Included also are areas for receiving, storing, packing (canning, bottling, wrapping, boxing), preparing, edible waste storage and enclosed processing systems (mills, dairies, edible oils, syrups) of food. Serving areas where food is exposed and the facility is in operation are also considered food areas. Non-food/ non-feed handling areas of food/feed handling establishments include garbage rooms, lavatories, floor drains (to sewers), entries and vestibules, offices, locker rooms, machine rooms, boiler rooms, garages, mop closets, and storage (after canning or bottling).

IMPORTANT: READ BEFORE USE

Read the entire Directions for Use, Conditions, Disclaimer of Warranties and Limitations of Liability before using this product. If terms are not acceptable, return the unopened product container at once. By using this product, user or buyer accepts the following Conditions, Disclaimer of Warranties and Limitations of Liability.

CONDITIONS: The directions for use of this product are believed to be adequate and must be followed carefully. However, it is impossible to eliminate all risks associated with the use of this product. Crop injury, ineffectiveness or other unintended consequences may result because of such factors as weather conditions, presence of other materials, or the manner of use or application, all of which are beyond the control of Bayer CropScience LP. All such risks shall be assumed by the user or buyer.

DISCLAIMER OF WARRANTIES: TO THE EXTENT CONSISTENT WITH APPLICABLE LAW, BAYER CROPSCIENCE LP MAKES NO OTHER WARRANTIES, EXPRESS OR IMPLIED, OF MERCHANTABILITY OR OF FITNESS FOR A PARTICULAR PURPOSE OR OTHERWISE, THAT EXTEND BEYOND THE STATEMENTS MADE ON THIS LABEL. No agent of Bayer CropScience LP is authorized to make any warranties beyond those contained herein or to modify the warranties contained herein. TO THE EXTENT CONSISTENT WITH APPLICABLE LAW, BAYER CROPSCIENCE LP DISCLAIMS ANY LIABILITY WHATSOEVER FOR SPECIAL INCIDENTAL OR CONSEQUENTIAL DAMAGES RESULTING FROM THE USE OR HANDLING OF THIS PRODUCT.

LIMITATIONS OF LIABILITY: TO THE EXTENT CONSISTENT WITH APPLICABLE LAW, THE EXCLUSIVE REMEDY OF THE USER OR BUYER FOR ANY AND ALL LOSSES, INJURIES OR DAMAGES RESULTING FROM THE USE OR HANDLING OF THIS PRODUCT, WHETHER IN CONTRACT, WARRANTY, TORT, NEGLIGENCE, STRICT LIABILITY OR OTHERWISE, SHALL NOT EXCEED THE PURCHASE PRICE PAID, OR AT BAYER CROPSCIENCE LP'S ELECTION, THE REPLACEMENT OF PRODUCT.

Bayer (reg'd), the Bayer Cross (reg'd) and Tempo® are registered trademarks of Bayer.

Bayer

Produced for:
Bayer Environmental Science
A Division of Bayer CropScience LP
5000 CentreGreen Way, Suite 400
Cary, NC 27513



Tempo[®] 1% DUST

INSECTICIDE
Ready To Use

For Use Only By Pest Management
Professionals and Commercial Applicators

Active Ingredient: Cyfluthrin, cyano(4-fluoro-3-phenoxyphenyl)-methyl 3-(2,2-dichloroethenyl)-2,2-dimethylcyclopropane-carboxylate 1%

OTHER Ingredients: 99%

Total: 100%

EPA Reg. No. 432-1373

STOP - Read the label before use.
KEEP OUT OF REACH OF CHILDREN
CAUTION

FIRST AID

If in eyes	<ul style="list-style-type: none"> Hold eye open and rinse slowly and gently with water for 15 to 20 minutes. Remove contact lenses, if present, after the first 5 minutes, then continue rinsing eye. Call a poison control center or doctor for treatment advice.
If swallowed	<ul style="list-style-type: none"> Call a poison control center or doctor immediately for treatment advice. Have person sip a glass of water if able to swallow. Do not induce vomiting unless told to by a poison control center or doctor. Do not give anything by mouth to an unconscious person.
If inhaled	<ul style="list-style-type: none"> Move person to fresh air. If person is not breathing, call 911 or an ambulance, then give artificial respiration, preferably mouth-to-mouth if possible. Call a poison control center or doctor for further treatment advice.
If on skin	<ul style="list-style-type: none"> Take off contaminated clothing. Rinse skin immediately with plenty of water for 15 to 20 minutes. Call a poison control center or doctor for treatment advice.

Have the product container or label with you when calling a poison control center or doctor or going for treatment. The Bayer Environmental Science Emergency Response Telephone No. is 1-800-334-7577.

Note To Physician: No specific antidote is available. Treat the patient symptomatically.

Net Weight
1.25 Pounds
04325140
05976935C 110830AV3

▲ Pull here to open



TEMPO® 1% DUST INSECTICIDE READY TO USE

Version 3.0 / USA
102000006700

1/11
Revision Date: 09/19/2014
Print Date: 02/09/2015

SECTION 1: IDENTIFICATION OF THE SUBSTANCE/MIXTURE AND OF THE COMPANY/UNDERTAKING

Product identifier

Trade name TEMPO® 1% DUST INSECTICIDE READY TO USE
Product code (UVP) 05173213
SDS Number 102000006700
EPA Registration No. 432-1373

Relevant identified uses of the substance or mixture and uses advised against

Use Insecticide
Restrictions on use See product label for restrictions.

Information on manufacturer

Bayer Environmental Science
2 T.W. Alexander Drive
Research Triangle PK, NC 27709
United States

Emergency telephone no.

Emergency Telephone Number (24hr/ 7 days) 1-800-334-7577 (24 hours/day)

Product Information Telephone Number 1-800-331-2867

SDS Information or Request SDSINFO.BCS-NA@bayer.com

SECTION 2: HAZARDS IDENTIFICATION

Classification in accordance with regulation HCS 29CFR §1910.1200

Acute toxicity (Oral): Category 4
Eye irritation : Category 2B



Signal word: Warning

Hazard statements
Harmful if swallowed.
Causes eye irritation.

Precautionary statements
Wash thoroughly after handling.
Do not eat, drink or smoke when using this product.



TEMPO® 1% DUST INSECTICIDE READY TO USE

Version 3.0 / USA
102000006700

2/11
Revision Date: 09/19/2014
Print Date: 02/09/2015

IF SWALLOWED: Call a POISON CENTER/doctor/physician if you feel unwell.
Rinse mouth.

IF IN EYES: Rinse cautiously with water for several minutes. Remove contact lenses, if present and easy to do. Continue rinsing.

If eye irritation persists: Get medical advice/ attention.

Dispose of contents/container in accordance with local regulation.

Other hazards

No other hazards known.

SECTION 3: COMPOSITION/INFORMATION ON INGREDIENTS

Hazardous Component Name	CAS-No.	Concentration % by weight
Cyfluthrin	68359-37-5	1.00
Crystalline quartz (respirable)	14808-60-7	4.88
Calcium sulfate	13397-24-5	89.30

SECTION 4: FIRST AID MEASURES

Description of first aid measures

General advice

When possible, have the product container or label with you when calling a poison control center or doctor or going for treatment.

Inhalation

Move to fresh air. If person is not breathing, call 911 or an ambulance, then give artificial respiration, preferably mouth-to-mouth if possible. Call a physician or poison control center immediately.

Skin contact

Take off contaminated clothing and shoes immediately. Wash off immediately with plenty of water for at least 15 minutes. Call a physician or poison control center immediately.

Eye contact

Hold eye open and rinse slowly and gently with water for 15-20 minutes. Remove contact lenses, if present, after the first 5 minutes, then continue rinsing eye. Call a physician or poison control center immediately.

Ingestion

Call a physician or poison control center immediately. Rinse out mouth and give water in small sips to drink. DO NOT induce vomiting unless directed to do so by a physician or poison control center. Never give anything by mouth to an unconscious person. Do not leave victim unattended.

Most important symptoms and effects, both acute and delayed

Symptoms

To date no symptoms are known.

Indication of any immediate medical attention and special treatment needed

Treatment

Appropriate supportive and symptomatic treatment as indicated by the patient's condition is recommended. There is no specific antidote.



TEMPO® 1% DUST INSECTICIDE READY TO USE

Version 3.0 / USA
102000006700

3/11
Revision Date: 09/19/2014
Print Date: 02/09/2015

SECTION 5: FIREFIGHTING MEASURES

Extinguishing media

Suitable Use water spray, alcohol-resistant foam, dry chemical or carbon dioxide.

Unsuitable High volume water jet

Special hazards arising from the substance or mixture Dangerous gases are evolved in the event of a fire.

Advice for firefighters

Special protective equipment for fire-fighters Firefighters should wear NIOSH approved self-contained breathing apparatus and full protective clothing.

Further information Keep out of smoke. Fight fire from upwind position. Cool closed containers exposed to fire with water spray. Do not allow run-off from fire fighting to enter drains or water courses.

Flash point not applicable

Autoignition temperature no data available

Lower explosion limit not applicable

Upper explosion limit not applicable

Explosivity no data available

SECTION 6: ACCIDENTAL RELEASE MEASURES

Personal precautions, protective equipment and emergency procedures

Precautions Keep unauthorized people away. Isolate hazard area. Avoid contact with spilled product or contaminated surfaces.

Methods and materials for containment and cleaning up

Methods for cleaning up Avoid dust formation. Sweep up or vacuum up spillage and collect in suitable container for disposal. Clean contaminated floors and objects thoroughly, observing environmental regulations.

Additional advice Use personal protective equipment. Do not allow to enter soil, waterways or waste water canal.

Reference to other sections Information regarding safe handling, see section 7.
Information regarding personal protective equipment, see section 8.
Information regarding waste disposal, see section 13.

SECTION 7: HANDLING AND STORAGE



TEMPO® 1% DUST INSECTICIDE READY TO USE

Version 3.0 / USA
102000006700

4/11
Revision Date: 09/19/2014
Print Date: 02/09/2015

Precautions for safe handling

Advice on safe handling

Handle and open container in a manner as to prevent spillage. Maintain exposure levels below the exposure limit through the use of general and local exhaust ventilation.

Hygiene measures

Wash hands thoroughly with soap and water after handling and before eating, drinking, chewing gum, using tobacco, using the toilet or applying cosmetics.
Remove Personal Protective Equipment (PPE) immediately after handling this product. Before removing gloves clean them with soap and water. Remove soiled clothing immediately and clean thoroughly before using again. Wash thoroughly and put on clean clothing.

Conditions for safe storage, including any incompatibilities

Requirements for storage areas and containers

Store in a cool, dry place and in such a manner as to prevent cross contamination with other crop protection products, fertilizers, food, and feed. Store in original container and out of the reach of children, preferably in a locked storage area.

Advice on common storage

Keep away from food, drink and animal feedingstuffs.

SECTION 8: EXPOSURE CONTROLS/PERSONAL PROTECTION

Control parameters

Components	CAS-No.	Control parameters	Update	Basis
Cyfluthrin	68359-37-5	0.01 mg/m3 (TWA)		OES BCS*
Cyfluthrin (Particulate.)	68359-37-5	5ug/m3 (AN ESL)	02 2013	TX ESL
Cyfluthrin (Particulate.)	68359-37-5	50ug/m3 (ST ESL)	02 2013	TX ESL
Crystalline quartz (respirable)	14808-60-7	0.1 mg/m3 (TWA)	1998	JO TLV
Crystalline quartz (respirable) (Respirable fraction.)	14808-60-7	0.025 mg/m3 (TWA)	02 2012	ACGIH
Crystalline quartz (respirable) (Respirable dust.)	14808-60-7	0.05 mg/m3 (REL)	2010	NIOSH
Crystalline quartz (respirable) (Respirable dust.)	14808-60-7	0.1 mg/m3 (TWA)	1989	OSHA Z1A
Crystalline quartz (respirable) (Respirable dust.)	14808-60-7	0.1 mg/m3 (TWA)	06 2008	TN OEL
Crystalline quartz (respirable) (Particulate.)	14808-60-7	14ug/m3 (ST ESL)	02 2013	TX ESL

Bayer Environmental Science
SAFETY DATA SHEET



TEMPO® 1% DUST INSECTICIDE READY TO USE

5/11

Version 3.0 / USA
10200006700

Revision Date: 09/19/2014
Print Date: 02/09/2015

Crystalline quartz (respirable) (Particulate.)	14808-60-7	0.27ug/m3 (AN ESL)	02 2013	TX ESL
Crystalline quartz (respirable) (Total dust.)	14808-60-7	0.3 mg/m3 (TWA PEL)	08 2010	US CA OEL
Crystalline quartz (respirable) (Respirable dust.)	14808-60-7	0.1 mg/m3 (TWA PEL)	08 2010	US CA OEL
Crystalline quartz (respirable) (Respirable.)	14808-60-7	2.4millions of particles per cubic foot of air (TWA)	2000	Z3
Crystalline quartz (respirable) (Respirable.)	14808-60-7	0.1 mg/m3 (TWA)	2000	Z3
Crystalline quartz (respirable) (Total dust.)	14808-60-7	0.3 mg/m3 (TWA)	2000	Z3
Calcium sulfate (Inhalable fraction.)	13397-24-5	10 mg/m3 (TWA)	02 2012	ACGIH
Calcium sulfate (Total)	13397-24-5	10 mg/m3 (REL)	2010	NIOSH
Calcium sulfate (Respirable.)	13397-24-5	5 mg/m3 (REL)	2010	NIOSH
Calcium sulfate (Total dust.)	13397-24-5	15 mg/m3 (PEL)	02 2006	OSHA Z1
Calcium sulfate (Respirable fraction.)	13397-24-5	5 mg/m3 (PEL)	02 2006	OSHA Z1
Calcium sulfate (Total dust.)	13397-24-5	15 mg/m3 (TWA)	1989	OSHA Z1A
Calcium sulfate (Respirable fraction.)	13397-24-5	5 mg/m3 (TWA)	1989	OSHA Z1A
Calcium sulfate	13397-24-5	5ug/m3 (AN ESL)	03 2012	TX ESL
Calcium sulfate	13397-24-5	50ug/m3 (ST ESL)	03 2012	TX ESL
Silica, amorphe	7631-86-9	6 mg/m3 (REL)	2010	NIOSH
Silica, amorphe (Particulate.)	7631-86-9	27ug/m3 (ST ESL)	02 2013	TX ESL
Silica, amorphe (Particulate.)	7631-86-9	2ug/m3 (AN ESL)	02 2013	TX ESL
Silica, amorphe	7631-86-9	0.8 mg/m3 (TWA)	2000	Z3
Silica, amorphe	7631-86-9	20millions of particles per cubic foot of air (TWA)	2000	Z3

*OES BCS: Internal Bayer CropScience "Occupational Exposure Standard"



TEMPO® 1% DUST INSECTICIDE READY TO USE

Version 3.0 / USA
102000006700

6/11
Revision Date: 09/19/2014
Print Date: 02/09/2015

Exposure controls

Personal protective equipment

In normal use and handling conditions please refer to the label and/or leaflet. In all other cases the following recommendations would apply.

Respiratory protection

When respirators are required, select NIOSH approved equipment based on actual or potential airborne concentrations and in accordance with the appropriate regulatory standards and/or industry recommendations.

Hand protection

Chemical resistant nitrile rubber gloves

Eye protection

Goggles

Skin and body protection

Wear long-sleeved shirt and long pants and shoes plus socks.

General protective measures

Follow manufacturer's instructions for cleaning/maintaining PPE. If no such instructions for washables, use detergent and warm/tepid water.
Keep and wash PPE separately from other laundry.

SECTION 9. PHYSICAL AND CHEMICAL PROPERTIES

Appearance	white to light beige
Physical State	powder
Odor	musty
Odour Threshold	no data available
pH	no data available
Vapor Pressure	not applicable
Vapor Density (Air = 1)	not applicable
Bulk density	61 lb/ft ³ (bulk density tapped) 35 lb/ft ³ (loose)
Evaporation rate	no data available
Boiling Point	not applicable
Melting / Freezing Point	not applicable
Water solubility	dispersible
Minimum Ignition Energy	no data available
Decomposition temperature	ca. 500 °C
Partition coefficient: n-octanol/water	not applicable
Viscosity	not applicable



TEMPO® 1% DUST INSECTICIDE READY TO USE

Version 3.0 / USA
102000006700

7/11
Revision Date: 09/19/2014
Print Date: 02/09/2015

Flash point	not applicable
Autoignition temperature	no data available
Lower explosion limit	not applicable
Upper explosion limit	not applicable
Explosivity	no data available

SECTION 10: STABILITY AND REACTIVITY

Reactivity

Thermal decomposition	ca. 500 °C
Chemical stability	Stable under recommended storage conditions.
Possibility of hazardous reactions	No dangerous reaction known under conditions of normal use.
Conditions to avoid	Heat, flames and sparks. Exposure to moisture.
Incompatible materials	no data available
Hazardous decomposition products	No decomposition products expected under normal conditions of use.

SECTION 11: TOXICOLOGICAL INFORMATION

Exposure routes	Inhalation, Eye contact, Skin Absorption, Ingestion
Immediate Effects	
Eye	Moderate eye irritation.
Skin	Can cause irritation to the skin resulting in effects such as burning and/or tingling sensation. May cause irritation, redness. Harmful if absorbed through skin.
Ingestion	Harmful if swallowed.
Inhalation	Harmful if inhaled. May cause upper respiratory tract irritation.
Information on toxicological effects	
Acute oral toxicity	LD50 (male rat) 3,084 mg/kg LD50 (female rat) 1,733 mg/kg
Acute inhalation toxicity	LC50 (male/female combined rat) > 1.18 mg/l Exposure time: 4 h Determined in the form of dust. Highest attainable concentration.



TEMPO® 1% DUST INSECTICIDE READY TO USE

Version 3.0 / USA
102000006700

8/11
Revision Date: 09/19/2014
Print Date: 02/09/2015

No deaths

LC50 (male/female combined rat) > 4.72 mg/l
Exposure time: 1 h
Determined in the form of dust.
Extrapolated from the 4 hr LC50.

Acute dermal toxicity LD50 (male/female combined rabbit) > 2,000 mg/kg
Skin irritation Slight irritation (rabbit)
Eye irritation Mild eye irritation. (rabbit)
Sensitisation Non-sensitizing. (guinea pig)

Assessment repeated dose toxicity

The toxic effects of Cyfluthrin are related to transient hyperactivity typical for pyrethroid neurotoxicity.

Assessment Mutagenicity

Cyfluthrin was not mutagenic or genotoxic in a battery of in vitro and in vivo tests.

Assessment Carcinogenicity

Cyfluthrin was not carcinogenic in lifetime feeding studies in rats and mice.

ACGIH

Crystalline quartz (respirable)	14808-60-7	Group A2
---------------------------------	------------	----------

NTP

Crystalline quartz (respirable)	14808-60-7	2000
---------------------------------	------------	------

IARC

Crystalline quartz (respirable)	14808-60-7	Overall evaluation: 1
---------------------------------	------------	-----------------------

OSHA

None.

Assessment toxicity to reproduction

Cyfluthrin caused reproduction toxicity in a two-generation study in rats only at dose levels also toxic to the parent animals. The reproduction toxicity seen with Cyfluthrin is related to parental toxicity.

Assessment developmental toxicity

Cyfluthrin caused developmental toxicity only at dose levels toxic to the dams. The developmental effects seen with Cyfluthrin are related to maternal toxicity.

Further information

Acute toxicity studies have been bridged from a similar formulation(s).
The non-acute information pertains to the active ingredient(s).

SECTION 12: ECOLOGICAL INFORMATION

Toxicity to fish LC50 (Oncorhynchus mykiss (Rainbow trout)) 0.00047 mg/l



TEMPO® 1% DUST INSECTICIDE READY TO USE

Version 3.0 / USA
102000006700

9/11
Revision Date: 09/19/2014
Print Date: 02/09/2015

	Exposure time: 96 h The value mentioned relates to the active ingredient cyfluthrin.
Toxicity to aquatic invertebrates	EC50 (Water flea (<i>Daphnia magna</i>)) 0.00016 mg/l Exposure time: 48 h The value mentioned relates to the active ingredient cyfluthrin.
Toxicity to aquatic plants	IC50 (<i>Desmodium subspicatus</i>) > 10 mg/l Growth rate; Exposure time: 72 h The value mentioned relates to the active ingredient cyfluthrin.
Biodegradability	Cyfluthrin: ; not rapidly biodegradable
Koc	Cyfluthrin: Koc: 64300
Bioaccumulation	Cyfluthrin: Bioconcentration factor (BCF) 506; Does not bioaccumulate.
Mobility in soil	Cyfluthrin: Immobile in soil
Environmental precautions	Do not apply directly to water, to areas where surface water is present or to intertidal areas below the mean high water mark. Do not contaminate surface or ground water by cleaning equipment or disposal of wastes, including equipment wash water. Apply this product as specified on the label.

SECTION 13: DISPOSAL CONSIDERATIONS

Waste treatment methods

Product	Pesticide, spray mixture or rinse water that cannot be used according to label instructions may be disposed of on site or at an approved waste disposal facility. Dispose in accordance with all local, state/provincial and federal regulations.
Contaminated packaging	Do not re-use empty containers. Completely empty container into application equipment, then dispose of empty container in a sanitary landfill, by incineration or by other procedures approved by state/provincial and local authorities. If burned, stay out of smoke.
RCRA Information	Characterization and proper disposal of this material as a special or hazardous waste is dependent upon Federal, State and local laws and are the user's responsibility. RCRA classification may apply.

SECTION 14: TRANSPORT INFORMATION

49CFR	Not dangerous goods / not hazardous material
IMDG	
UN number	3077

Bayer Environmental Science
SAFETY DATA SHEET



TEMPO® 1% DUST INSECTICIDE READY TO USE

Version 3.0 / USA
102000006700

10/11
Revision Date: 09/19/2014
Print Date: 02/09/2015

Class 9
Packaging group III
Marine pollutant YES
Proper shipping name ENVIRONMENTALLY HAZARDOUS SUBSTANCE, SOLID,
N.O.S.
(CYFLUTHRINE MIXTURE)

IATA
UN number 3077
Class 9
Packaging group III
Environm. Hazardous Mark YES
Proper shipping name ENVIRONMENTALLY HAZARDOUS SUBSTANCE, SOLID,
N.O.S.
(CYFLUTHRINE MIXTURE)

This transportation information is not intended to convey all specific regulatory information relating to this product. It does not address regulatory variations due to package size or special transportation requirements.

Freight Classification: INSECTICIDES OR FUNGICIDES, N.O.I., OTHER THAN POISON

SECTION 15: REGULATORY INFORMATION

EPA Registration No. 432-1373

US Federal Regulations

TSCA list

Crystalline quartz (respirable) 14808-60-7

US. Toxic Substances Control Act (TSCA) Section 12(b) Export Notification (40 CFR 707, Subpt D)
None.

SARA Title III - Section 302 - Notification and Information

None.

SARA Title III - Section 313 - Toxic Chemical Release Reporting

Cyfluthrin 68359-37-5 10,000lbs

US States Regulatory Reporting

CA Prop65

This product contains a chemical known to the State of California to cause cancer.

Crystalline quartz (respirable) 14808-60-7

US State Right-To-Know Ingredients

Cyfluthrin 68359-37-5 NJ
Crystalline quartz (respirable) 14808-60-7 MN

Canadian Regulations

Canadian Domestic Substance List

Crystalline quartz (respirable) 14808-60-7
Calcium sulfate 13397-24-5



TEMPO® 1% DUST INSECTICIDE READY TO USE

Version 3.0 / USA
102000006700

11/11
Revision Date: 09/19/2014
Print Date: 02/09/2015

Environmental

CERCLA

None.

Clean Water Section 307 Priority Pollutants

None.

Safe Drinking Water Act Maximum Contaminant Levels

None.

International Regulations

European Inventory of Existing Commercial Substances (EINECS)

Cyfluthrin	68359-37-5
Crystalline quartz (respirable)	14808-60-7

EPA/FIFRA Information:

This chemical is a pesticide product registered by the Environmental Protection Agency and is subject to certain labeling requirements under federal pesticide law. These requirements differ from the classification criteria and hazard information required for safety data sheets, and for workplace labels of non-pesticide chemicals. Following is the hazard information required on the pesticide label:

Signal word: Caution!

Hazard statements: Harmful if swallowed, inhaled or absorbed through the skin.
Moderate eye irritation.
Do not get in eyes, on skin, or on clothing.
Avoid breathing dust.

SECTION 16: OTHER INFORMATION

NFPA 704 (National Fire Protection Association):

Health - 2 Flammability - 1 Instability - 0 Others - none

HMIS (Hazardous Materials Identification System, based on the Third Edition Ratings Guide)

Health - 2 Flammability - 1 Physical Hazard - 0 PPE -

0 = minimal hazard, 1 = slight hazard, 2 = moderate hazard, 3 = severe hazard, 4 = extreme hazard

Reason for Revision: Revised according to the current OSHA Hazard Communication Standard (29CFR1910.1200)

Revision Date: 09/19/2014

This information is provided in good faith but without express or implied warranty. The customer assumes all responsibility for safety and use not in accordance with label instructions. The product names are registered trademarks of Bayer.